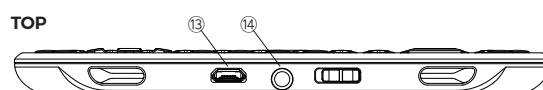
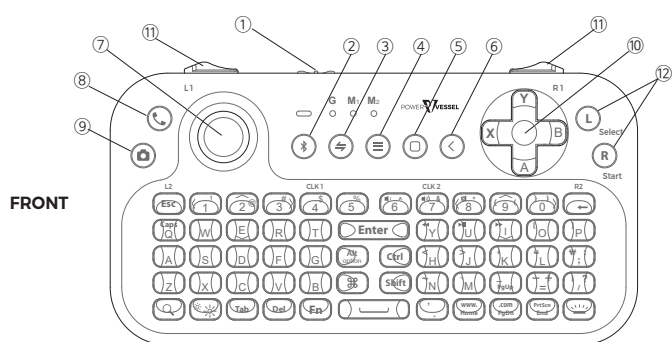


## Specification

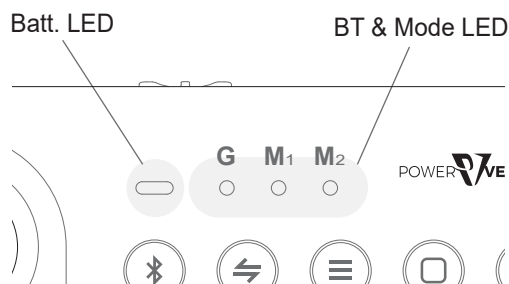
- Transmission mode :  
HID - Bluetooth 4.0+EDR / Audio - Bluetooth 4.2 CSR , up to 10 meters
- Transmission power : ±5db
- Power supply : Rechargeable 450mAh polymer Li-ion battery
- Charging voltage : 4.4 ~ 5.25V
- Charging current : < 300mA
- Working current : < 40mA
- Dimensions : 128x66x10 mm
- Weight : 67g

## Product Overview



- ① Power button
- ② Bluetooth button
- ③ Mode switch button
- ④ Menu button
- ⑤ Home button
- ⑥ Back button
- ⑦ Jog mouse
- ⑧ Hands free button
- ⑨ Selfie shutter button
- ⑩ Directional keys
- ⑪ Shoulder key (L/R)
- ⑫ Mouse keys (L/R)
- ⑬ Charging port (Micro USB B-type, 5pin)
- ⑭ Earphone jack (3.5 pi)

## LED indicator



|               |       |                            |  |
|---------------|-------|----------------------------|--|
| Indicator LED | ○ ○ ○ | Flashing (2 sec intervals) | Pairing mode (Auto)  |
|               | ○○○   | Rapidly flashing           | Pairing mode (Manual)<br>(by holding down the BT button for 3 seconds) |
|               | —     | Flashing                   | Connected  |
| Battery LED   | —     | Off                        | Power Off / Sleep  |
|               | —     | Steady blue                | Charging (100% → LED Off)  |
|               | —     | Flashing                   | Low battery  |

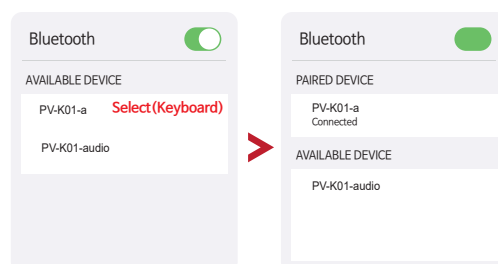
## Installation (Bluetooth)

### Android/ Windows PC/ Mac

1. To pair the keyboard, go to your device to open the Bluetooth and search.
2. Turn on the keyboard, the keyboard will be found automatically at your device.
3. "PV-K01-a" will display on the Bluetooth searching list. Click and connect via Bluetooth.  
(If the keyboard is not found, proceed with the pairing manually as shown below.)

To disconnect from an existing connection and reconnect the keyboard to another device,

- ① Hold down the BT button for 3 seconds.
- ② Small dot LED will flash in white rapidly at 0.5 second intervals for one minute.  
(If the connection does not complete for one minute, the LED will turn off and the pairing will also end.)
- ③ "PV-K01-a" will display on the Bluetooth searching list. Click and connect via Bluetooth.

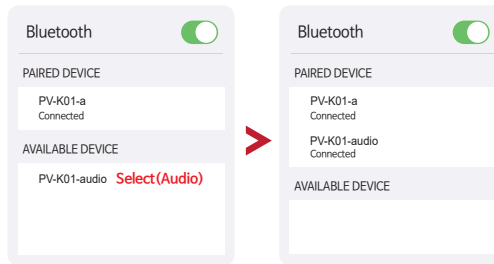


## For audio

Turn on the keyboard, the audio will be found automatically at your device.

1. To pair 'Audio', go to your device to open the Bluetooth and search.
2. "PV-K01-audio" will display on the Bluetooth searching list. Click and connect via Bluetooth.

If there is no "PV-K01-audio" or if the connection fails, you should reboot the keyboard.



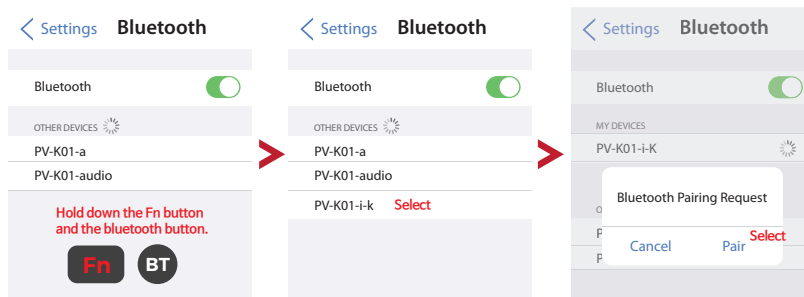
## iPhone/ iPad/ Apple TV

1. To pair the keyboard, go to your Apple device to open the Bluetooth and search.
2. Turn on the keyboard, hold down the Fn button and the BT button simultaneously for 3 seconds.
3. Small dot LED will flash in white rapidly at 0.5 second intervals for one minute.
4. "PV-K01-i-k" will be displayed on the Bluetooth searching list. Click and connect via Bluetooth.

※ To disconnect from an existing connection and reconnect the keyboard to another device, hold down the BT button for 3 seconds.

### < Apple TV >

※ If the bluetooth connection error (infinite loop), you should reboot Apple TV and connect "PV-K01-i-k" again.

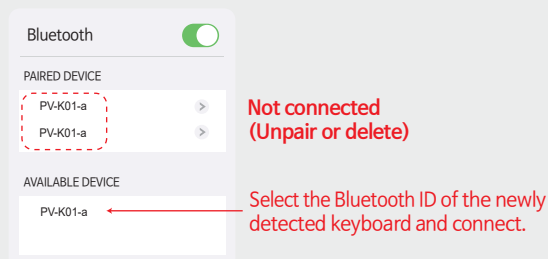


### \* Keyboard name keeps remaining, I can't connect !!

In Bluetooth 4.0 version, if the keyboard is not automatically paired and newly detected, the name of the existing Bluetooth device will remain in the 'Paired Device' list of the Bluetooth settings.

If reconnecting (manual pairing) does not work automatically, select the Bluetooth ID of the newly detected keyboard and connect.

(Unpair or delete the existing Bluetooth ID.)



## Features by connected device

You can change the functions of some keys depending on the M1 / M2 / G modes. However, due to manufacturers or the OS version of each device, the K01 keyboard function may vary.

**M<sub>1</sub>** Jog is set as mouse and XYAB is set as directional key. It is recommended to use on PC.

**M<sub>2</sub>** Jog is set as mouse and XYAB is set as Home/PgUp, PgDn, End. It is recommended to use on a device that cannot use a mouse.

**G** G mode can be used in games that support generic game controllers.

\* It cannot be used with devices that use dedicated controllers such as PlayStation, Nintendo, or Xbox.

\* On your iPhone / iPad, pair them with "PV-K01-i-g" for dedicated pre-mapping games.

### Android

Jog → Mouse(M1), Directional keys(M2), Joystick(G)

**M<sub>1</sub>** Jog : Mouse cursor  
Shoulder L : Select/Enter  
Shoulder R : Back

**M<sub>2</sub>** Jog : Mouse cursor  
XYAB : Page Up/Down, Home/End

**G** Jog : Mouse cursor  
A : Select/Enter  
B : Back

★ In game apps, you can use K01 keyboard as a game controller in G mode. (Not supported or key operation may vary depending on the game.)

### Nvidia Shield TV

Jog → Mouse(M1), Directional keys(M2), Joystick(G)

**M<sub>1</sub>** Jog : Mouse cursor  
XYAB : Directional keys  
Shoulder L : Select/Enter

**M<sub>2</sub>** Jog : Directional keys  
Enter/Space : Select/Enter

**G** Jog : Directional keys  
A : Select/Enter  
B : Back

★ In game apps, you can use K01 keyboard as a game controller in G mode. (Not supported or key operation may vary depending on the game.)

### iPhone / iPad

Jog → Mouse(M1), Directional keys(M2)

**M<sub>1</sub>** Jog : Mouse cursor  
XYAB : Directional keys (Web browser, Memo and some apps)  
Shoulder L : Enter  
Shoulder R : 'AssistiveTouch'

**M<sub>2</sub>** Jog : Directional keys (Web browser, Memo and some apps)  
YA : Page Up/Down

★ How to use a mouse.  
(M1 mode, iOS / iPadOS 13 or later, iPhone/iPad settings)  
Settings : Accessibility → Touch → AssistiveTouch 'On' → POINTER DEVICES 'Devides'  
→ Bluetooth Devices... : Select 'PV-K01-i-k'

### \* iPhone / iPad Game Pre-Mapping (PV-K01-i-g)

Enjoy the 'Asphalt 9', 'Super Phantom Cat 2' games with the K01 Keyboard!

When the K01 keyboard is connected to the iPhone / iPad with "PV-K01-i-g", the K01 keyboard will become the dedicated controller for 'Asphalt 9' and 'Super Phantom Cat 2'. On Apple devices, you can run games using only the MFi HID controller, so that PV-K01 supports dedicated games by the "Touch-mapping" solution.

Press the 'Mode Switch button' (↔) at the top of the K01 keyboard to change the mode (G / M1) to select the game.

※ How to pair : Space + Bluetooth button ( BT )



## Apple TV

Jog → Directional keys (M2)



Jog : Directional keys (App icons and menus)

Enter / Space : Run apps and menus (Run apps on the home screen : Enter key)

## Windows PC/ Mac

Jog → Mouse (M1), Directional keys (M2)



apps on the home screen

XYAB : apps on the home screen

Shoulder L/R : Mouse L/R button



Jog : Directional keys

YA : Page Up/Down

★ key : Windows key

★ key : Menu in activated program (same as mouse right click)

## Miscellaneous features



: Keypad backlight



: Handsfree in audio pairing mode (Wired earphone with Mic is required.)



: Shutter function when running camera app (Volume reduction in general)



: Adjust mouse cursor speed (Fn + Space, 2-step)

## Warning

- Do not store the device in a place with high humidity or dust.
- Do not expose the device to excessive heat or direct sunlight for prolonged periods of time.
- Do not store the product in a very cold place. The internal circuit may be damaged.
- Do not disassemble, repair or modify the device.
- Do not drop, hit or shake the device.
- Do not use cleaning products that contain benzene, solvents or alcohol.
- Do not scratch the surface of the device with sharp objects.
- Do not use the device near a microwave oven or wireless LAN products.
- The keyboard uses built-in lithium-ion battery. Please use only approved USB cables and chargers.

## A/S

1. Product failure or quality problem occurring within the first seven '7' days of purchase can be replaced with the same-specification product or refunded.
2. The following cases cannot be repaired free of charge even during the warranty period and are subject to paid repair only:
  - Product has failed due to user error and/or user carelessness;
  - User has disassembled or remodeled product at his/her discretion;
  - While in use, product has received damage or has failed due to outside force;
  - Product failure due to use of peripherals/cables not provided during purchase;
  - Product failures other than those mentioned above that are recognized as being attributable to user error.
3. For warranty, please contact the (sole) distributor or seller based in the region where you made the purchase.